



ALLEN & SHEPPARD.



9 Peppermint Gum Place WESTLEIGH NSW

4 3 2

With Mediterranean facade and touches throughout, this delightful home offers 4 bedrooms, 3 bathrooms (2 new), formal lounge, separate dining, 9ft ceilings and large downstairs rumpus.

The eat-in kitchen has views across the back outdoor living area and garden - wonderful for mums with young children. A fabulous feature of the home is the expansive front deck at the entry level. One can spend hours just sitting and relaxing and watching the world go by.

The rumpus has its own bathroom and kitchenette/laundry and is ideal for extended family living/home office etc.

Positioned in one of the area's favourite cul de sacs and so close to shops, parks, bushwalks and transport and within a walk of the school.

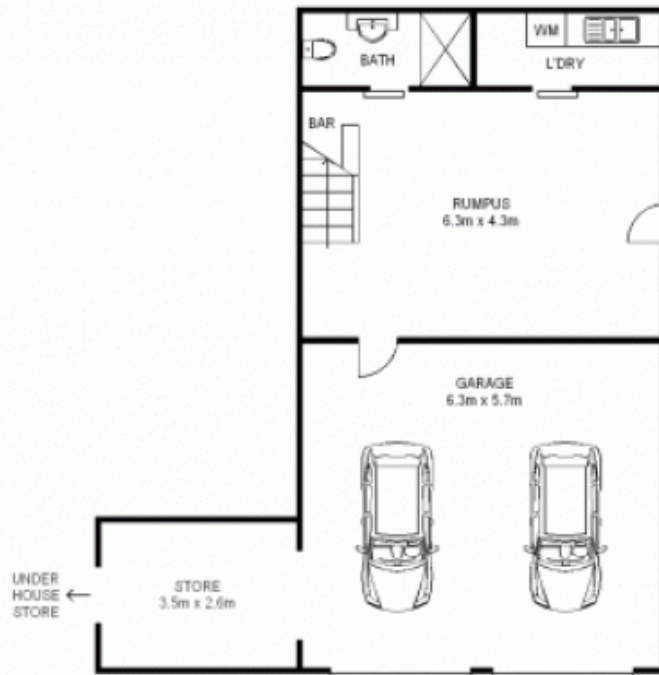
Agent interest - ring Dawn on 0408 197 691 for inspections and details.

Price : \$ 800,000

View : <https://www.allenandsheppard.com.au/sale/nsw/hills/westleigh/residential/house/6204396>



Dawn Rule
0408 197 691



GROUND LEVEL



LEVEL ONE



Scale shown in metres. All dimensions herein are approximate and gathered from sources believed to be reliable. Whilst every effort is made for the accuracy of our floor plans, interested parties should rely on their own enquires. Floor Plans by Industrie Media. www.industriemedia.com.au

S3

9 Peppermint Gum Place, Westleigh