



**7 Northumberland Avenue MOUNT COLAH NSW**

**4**  **2**  **2** 

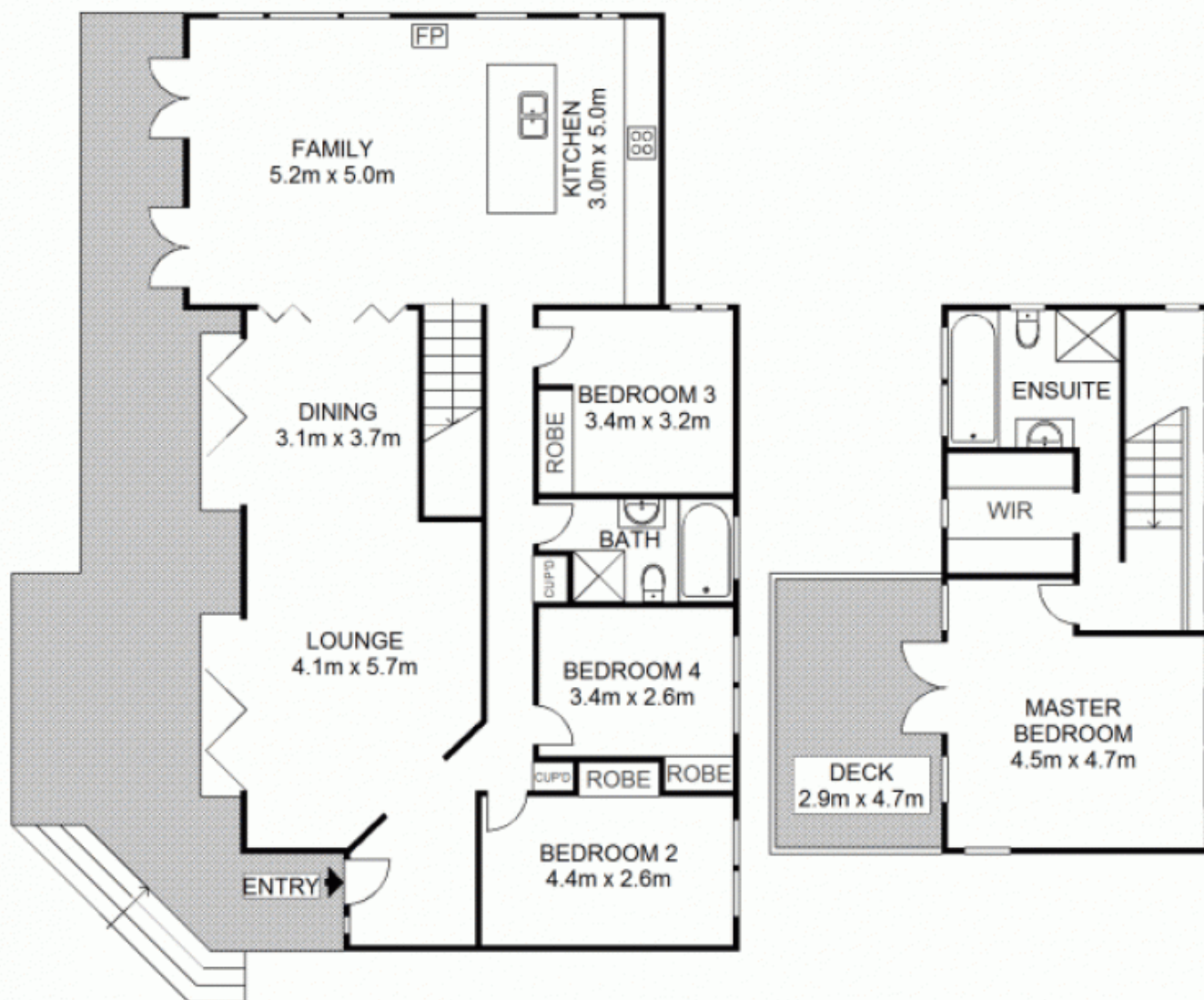
This truly stunning four bedroom dream home with a perfect North facing hardwood deck to enjoy the sunny valley views, represents a rare opportunity to live in a resort style home only minutes from amenities. This house has the 'wow factor', with nothing to do but enjoy. The home features lounge and dining rooms with two banks of bi fold doors connecting onto the large hardwood covered deck. Opening the internal screen doors will convert the entire living to open plan or close them and enjoy the warmth of the fireplace in the family room. The modern kitchen includes stone benches and glass splash backs, top of the range gas appliances, lots of storage and an island bench and breakfast bar. The home oozes class with ironbark flooring throughout and great use of glass and plantation shutters ensures a private view from almost every room in the house. There are three bedrooms, all with built in robes on the entry level and the ultimate parents retreat upstairs

**Price** : \$ 788,000

**View** : <https://www.allenandsheppard.com.au/sale/nsw/north-shore-upper/mount-colah/residential/house/6204407>



**James Sheppard**  
**02 9481 9000**



Scale shown in metres. All dimensions herein are approximate and gathered from sources believed to be reliable. Whilst every effort is made for the accuracy of our floor plans, interested parties should rely on their own enquires. Floor Plans by Industrie Media | [industriemedia.tv](http://industriemedia.tv)



S2

7 Northumberland Avenue, Mount Colah

**ALLEN & SHEPPARD**  
Your Leading Local Agent 9481 9000