



7 Golden Grove WESTLEIGH NSW

4  2  2 

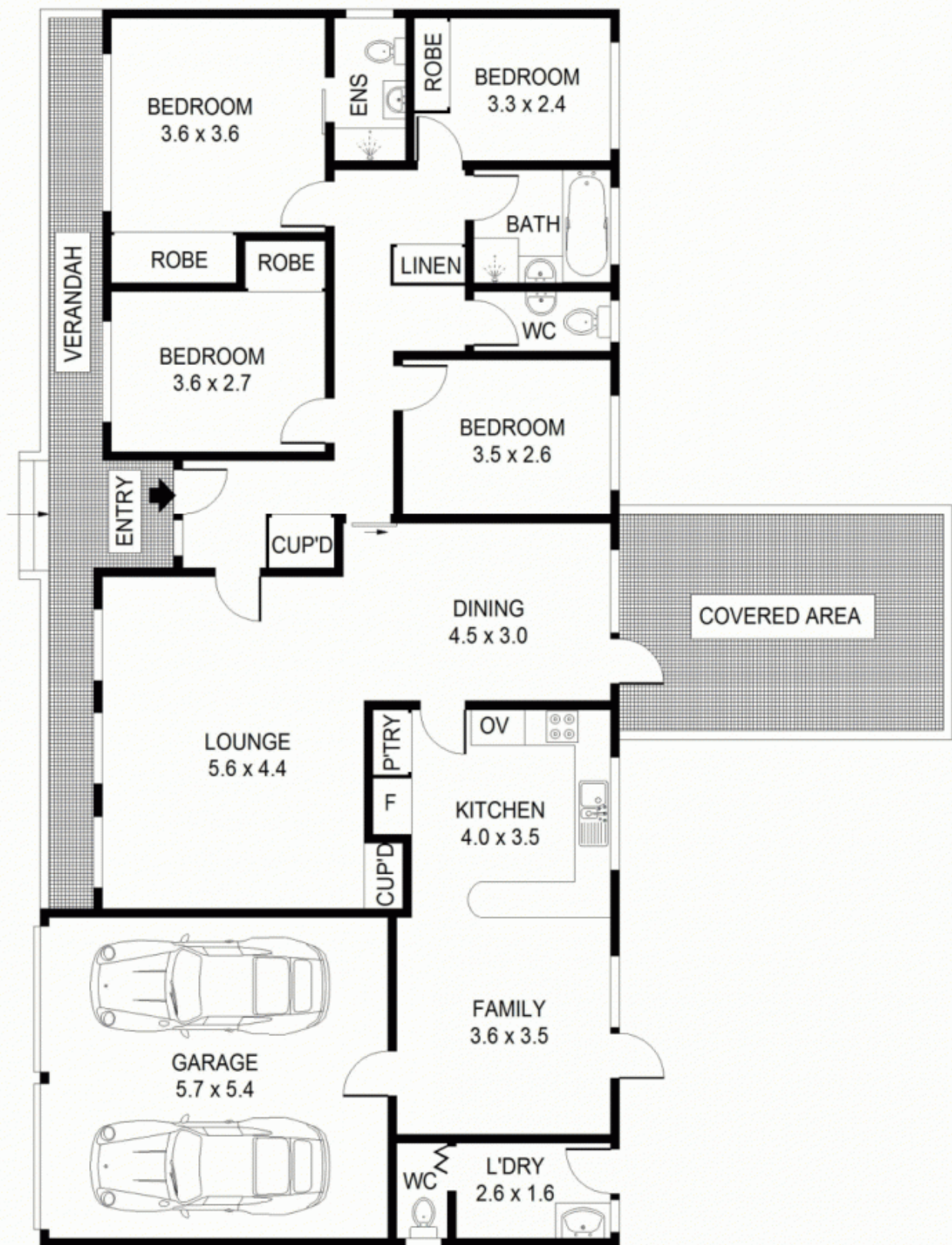
Idyllically located within a family friendly level cul de sac and bathed in sun lies this true single level 4 bedroom, 2.5 bathroom, 2 car garage gem. First time offered to the market the well maintained and presented home features a large L shaped lounge and dining room and a combined kitchen and family room that looks out to the rear lawn and covered pergola area. The well maintained and functional bathroom, ensuite and kitchen are in the best of conditions and ready for you to move in and create your own dream home. The real draw card for this property is the level sun covered location in a quality cul de sac only a few minute's walk to shops, park and child care facilities. This property is priced to sell and will not last long. Call to inspect today.

Price : \$ 790,000

View : <https://www.allenandsheppard.com.au/sale/nsw/hills/westleigh/residential/house/6204420>



James Sheppard
02 9481 9000



Scale shown in metres. All dimensions herein are approximate and gathered from sources believed to be reliable. Whilst every effort is made for the accuracy of our floor plans, interested parties should rely on their own enquires. Floor Plans by Industrie Media | industriemedia.tv

S2

7 Golden Grove, Westleigh

ALLEN & SHEPPARD
Your Leading Local Agent 9481 9000