



ALLEN & SHEPPARD.



5 Erawar Close WESTLEIGH NSW

4 3 2

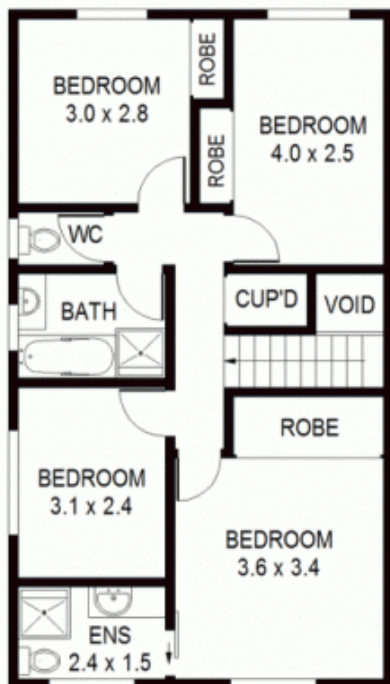
Perfectly positioned in the eye of a quiet cul de sac this well designed property offers so much for any family looking to make a home in this wonderful suburb. Boasting 4 bedrooms with ensuite to main, 3 bathrooms, a formal lounge and dining, a casual meals and family area plus a separate rumpus room ensuring there is room for all. Whilst the kids play on the sun filled green grass you will enjoy alfresco dining on the huge covered outdoor entertaining area that leads out from the family room and renovated kitchen with walk in pantry and breakfast bar. Add the large double lock up garage with auto doors, the landscaped gardens and the convenience of the bus at the end of the cul de sac and you have a fantastic opportunity to secure a wonderful Westleigh home.

Price : \$ 870,000

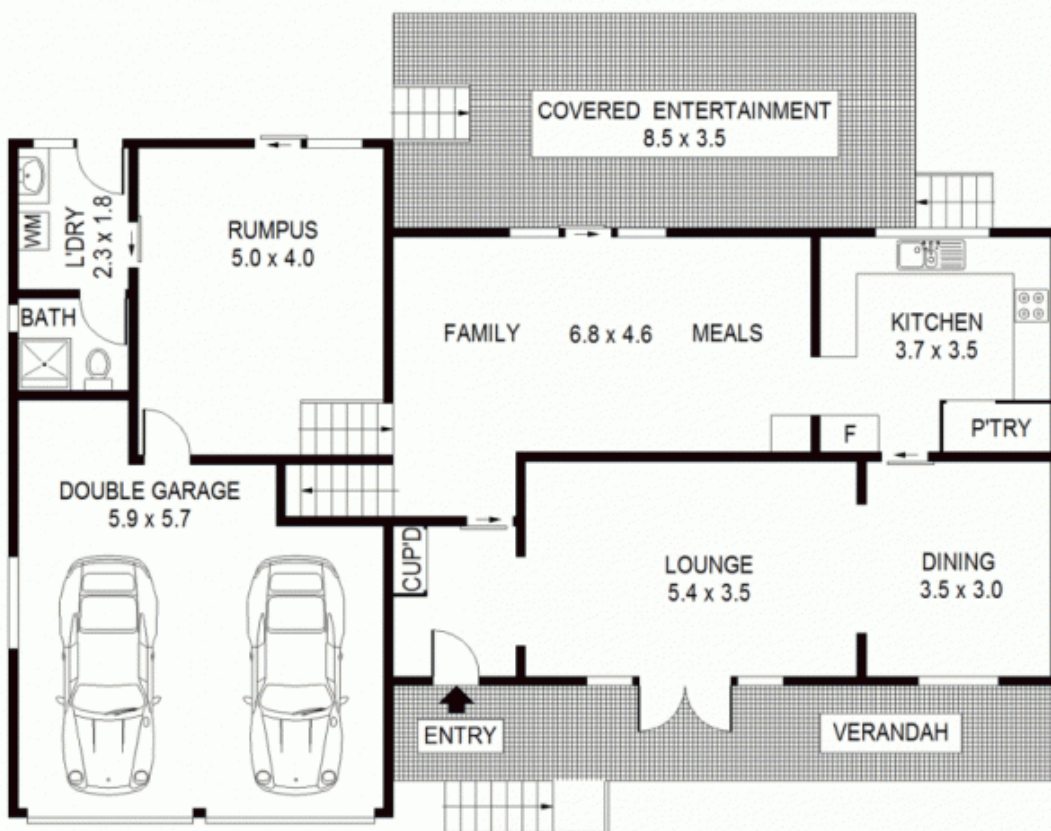
View : <https://www.allenandsheppard.com.au/sale/nsw/hills/westleigh/residential/house/6204440>



James Sheppard
02 9481 9000



TOP LEVEL



ENTRY LEVEL



Scale shown in metres. All dimensions herein are approximate and gathered from sources believed to be reliable. Whilst every effort is made for the accuracy of our floor plans, interested parties should rely on their own enquires. Floor Plans by Industrie Media | industriemedia.tv

S3

5 Erawar Close, Westleigh

ALLEN & SHEPPARD
Your Leading Local Agent
9481 9000