



# ALLEN & SHEPPARD.



## 5 Windam Place WESTLEIGH NSW

3 1 2

If you are looking for living space then this is your home. With an open flow the home offers an oversized family room, formal lounge, dining and casual meals area off the renovated kitchen plus a large utility or sun room. Outside there is a huge undercover BBQ area with fans and even a TV for days watching the cricket and the kids in the large concrete in ground pool. But perhaps the best thing about this 3 bedroom home is the ideal level and quiet cul de sac location that is walk to shops, bus and schools. There is nothing to do but move in and enjoy this home as the bathroom with separate toilet and the Kitchen have been renovated, a separate workshop has been added and there is ducted air conditioning, a double carport, gas fire place, separate toilet for the pool area and allot of natural light flowing into the Pettit and Sevitt designed home. This is a rare opportunity to secure a wonderfully designed, maintained and renovated home in one of Westleights

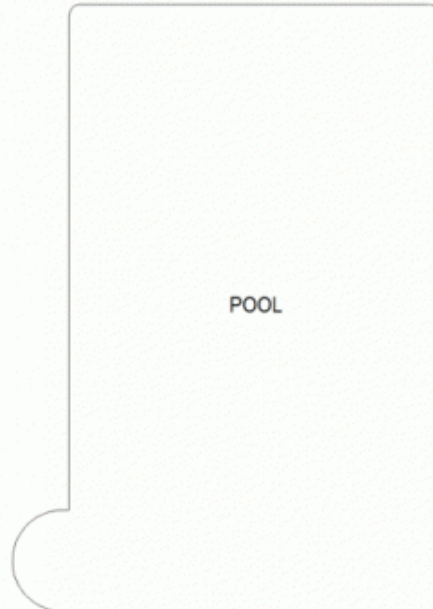
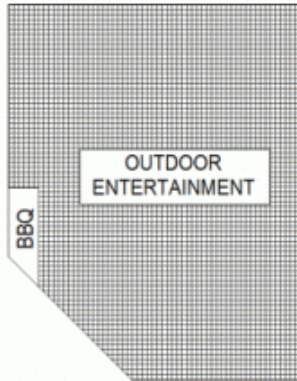
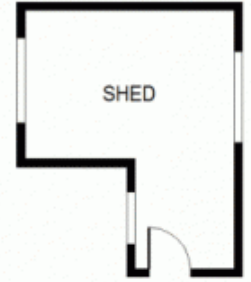
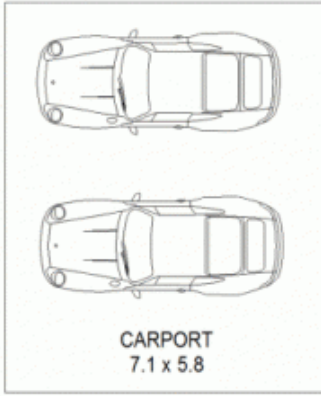
**Price** : \$ 860,000

**View** : <https://www.allenandsheppard.com.au/sale/nsw/hills/westleigh/residential/house/6204444>



**James Sheppard**  
02 9481 9000





Scale shown in metres. All dimensions herein are approximate and gathered from sources believed to be reliable. Whilst every effort is made for the accuracy of our floor plans, interested parties should rely on their own enquires. Floor Plans by Industrie Media | [industriemedia.tv](http://industriemedia.tv)

S2

5 Windam Place, Westleigh

