



ALLEN & SHEPPARD.



53 Duneba Drive WESTLEIGH NSW

3 1 1

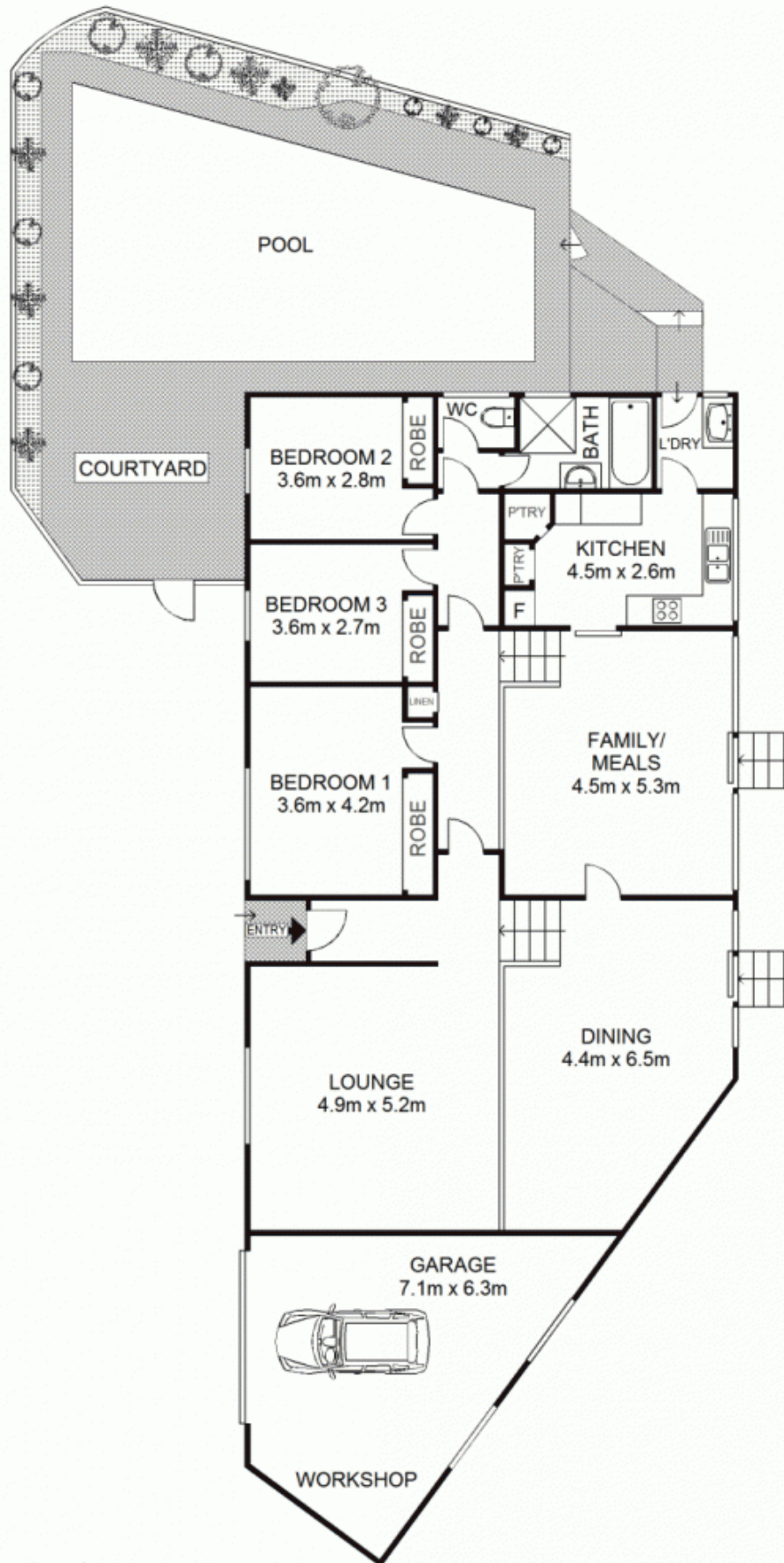
Positioned on the block to enjoy a tranquil bush view this 3 bedroom home has more than meets the eye. With large and open lounge and dining rooms plus a large family and meals area there is an abundance of living space. The cathedral ceilings and polished timber floor give a feeling of space and you will love the newly renovated kitchen with Caesar stone bench tops and glass splash back. All three bedrooms have built in robes, there is a large single garage with workspace and the bush outlook really provides a peaceful and private feeling to the home. The added bonus is a in ground concrete pool, reverse cycle split system air conditioning and a location that is walk to shops and schools plus the bus is at the door. The bushland outlook provides such a private and peaceful sanctuary like feel to this house, that would be ideal for families, downsizers or investors alike. Do not judge this home until you have been inside, call to inspect today.

Price : \$ 784,000

View : <https://www.allenandsheppard.com.au/sale/nsw/hills/westleigh/residential/house/6204445>



James Sheppard
02 9481 9000



Scale shown in metres. All dimensions herein are approximate and gathered from sources believed to be reliable. Whilst every effort is made for the accuracy of our floor plans, interested parties should rely on their own enquiries. Floor Plans by Industrie Media | industriemedia.tv

S2

53 Duneba Drive, Westleigh

