



# ALLEN & SHEPPARD.



9/18-22 Paling Street Thornleigh NSW

3 2 2

The perfect starter, investment or downsizer - this townhouse offers so much in such a quiet, yet very convenient location within walking distance to station and shops. All on one level, the home offers 3 bedrooms (main with ensuite, walk through wardrobe and private courtyard), kitchen, laundry and an open plan living area that flows to the sunny north facing courtyard. Downstairs the property offers 2 large single garages and multiple storage areas.

**Price** : \$ 709,000

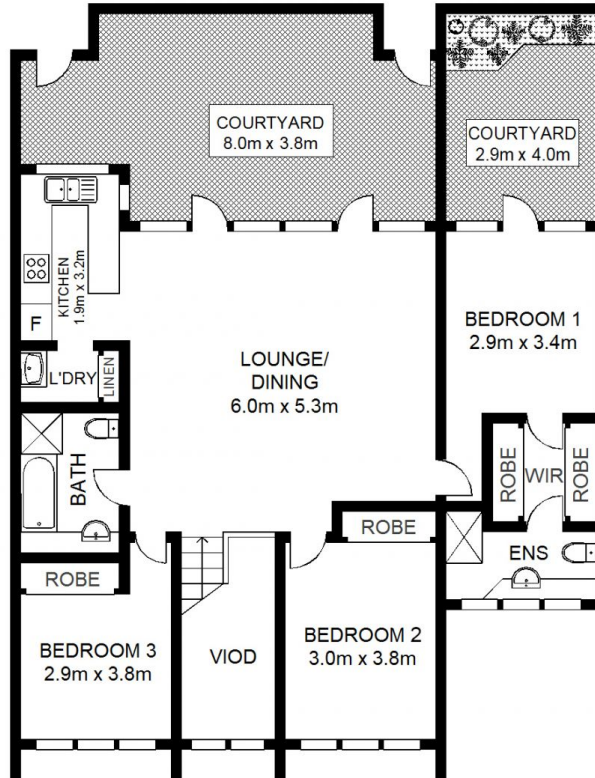
**View** : <https://www.allenandsheppard.com.au/sale/nsw/northern-suburbs/thornleigh/residential/townhouse/6204479>

- 10 Minute walk to Thornleigh Train Station
- 5 minute walk to Thornleigh plaza , Woolworths and Aldi
- Separate main bathroom with bath & shower
- R/C split air conditioning
- Court yards Fully fenced for children and pets
- Two separate single garages both with internal access
- Whisper quiet location with leafy aspect
- Very close to great walking and cycling trails at the top of

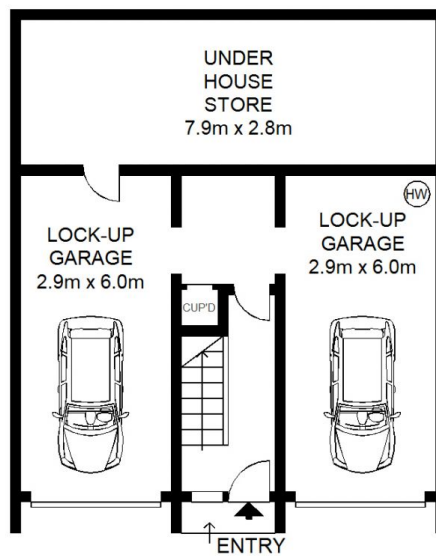


**James Sheppard**  
02 9481 9000

<https://www.allenandsheppard.com.au>



UPPER LEVEL



LOWER LEVEL



Scale shown in metres. All dimensions herein are approximate and gathered from sources believed to be reliable. Whilst every effort is made for the accuracy of our floor plans, interested parties should rely on their own enquiries. Floor Plans by Industrie Media | [industriemedia.tv](http://industriemedia.tv)

