



# ALLEN & SHEPPARD.



**101 Dartford Road Thornleigh NSW**

5 3 2

Positioned in one of the most sought after streets and among the finest of homes this 5 bedroom property will suit even the largest of families.

Featuring 4 bedrooms up stairs, all with built-ins; includes the main bedroom with walk in robe and ensuite, main bathroom including a corner spa bath, a Ventis air circulation system and a huge storage closet. Downstairs the home offers a 5th bedroom complete with ensuite, perfect for grandparents or guests. There are multiple living rooms including a large lounge, separate dining and a glass filled family room overlooking the covered entertaining deck and in ground pool. If all this is not enough the home also boasts a large separate studio or pool room, perfect for the kids to have their own space or convert it to a home office or flat. The 2 year old kitchen with stone bench-tops and state of the art appliances is perfectly positioned with a view across the family room and

**Land Size** : 695 sqm

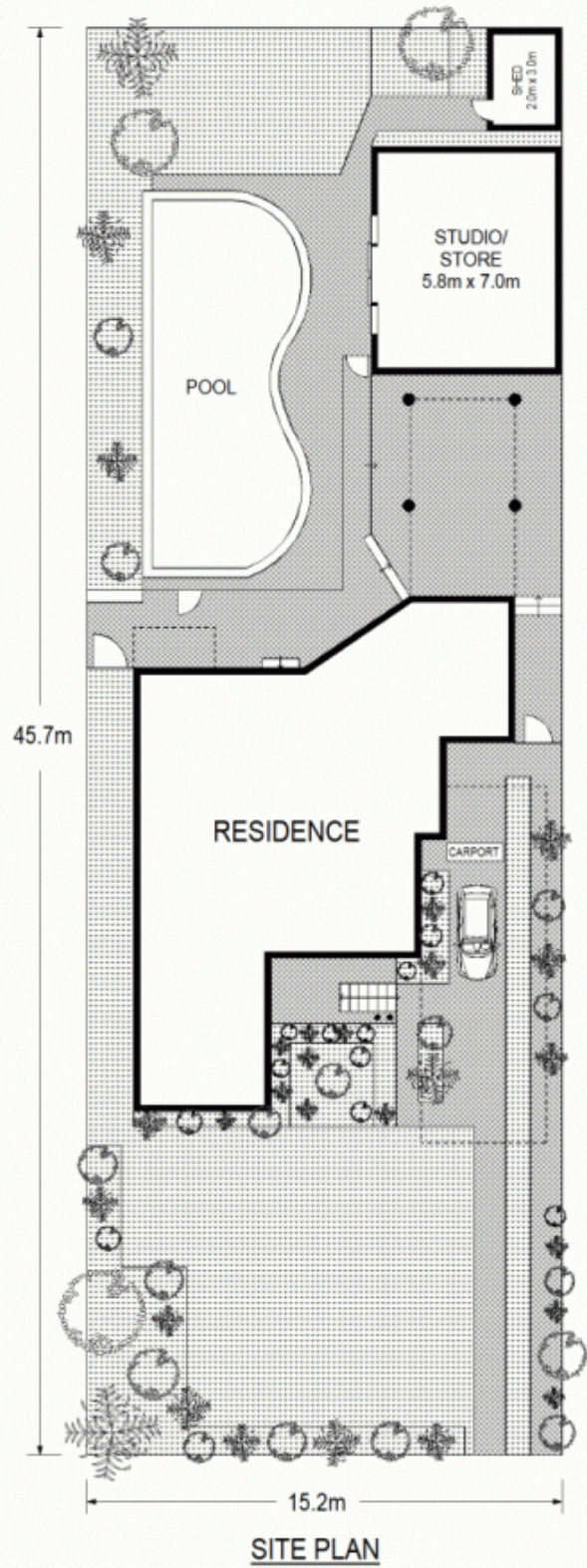
**View** : <https://www.allenandsheppard.com.au/sale/nsw/northern-suburbs/thornleigh/residential/house/6204502>



**James Sheppard**  
02 9481 9000



**Craig Taylor**  
02 9481 9000



Scale shown in metres. All dimensions herein are approximate and gathered from sources believed to be reliable. Whilst every effort is made for the accuracy of our floor plans, interested parties should rely on their own enquiries. Floor Plans by Industrie Media | [industriemedia.tv](http://industriemedia.tv) S3 + SP

101 Dartford Road, Thornleigh

**ALLEN & SHEPPARD**