



# ALLEN & SHEPPARD.



**22 Pritchard Street Thornleigh NSW**

4 2 2

Within a 400m walk to Thornleigh Train station stands this large 4 bedroom, 2 bathroom property boasting 3 large living areas and a 2 car garage with extra storage. The manageable corner lot has a north facing yard and patio area overlooked by the kitchen and entered onto by both the family and rumpus rooms. With fresh paint, carpet and floorboards throughout this property, it is ideal for investors or those wanting a low care home within an easy walk to Station, shops and cafes.

Features:

- 3 large living areas with a large formal lounge and dining, casual meals and family area off the kitchen with a glass filled sunny rumpus room.
- All 4 bedrooms are generous and offer built in robes, the main bedroom featuring an ensuite.
- A light and bright kitchen with gas cooking overlooks the

**Price** : \$ 1,200,000

**View** : <https://www.allenandsheppard.com.au/sale/nsw/northern-suburbs/thornleigh/residential/house/6204583>

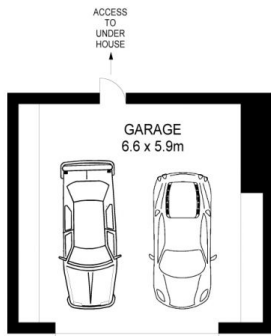


**James Sheppard**  
02 9481 9000

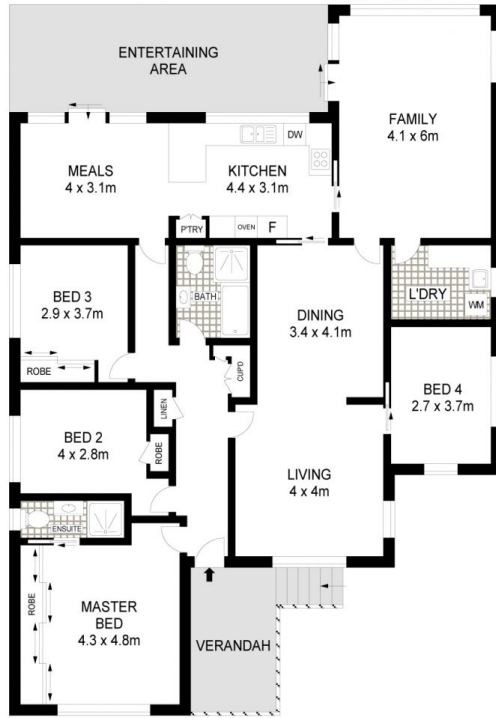


**Craig Taylor**  
02 9481 9000

<https://www.allenandsheppard.com.au>



LOWER GROUND FLOOR



GROUND FLOOR

Dimensions are approximate. All information contained is gathered from sources we believe to be reliable. However we cannot guarantee its accuracy and interested persons should rely on their own enquiries.  
www.visionphoto.com.au

**22 PRITCHARD STREET, THORNLEIGH**

APPROX. INTERNAL FLOOR AREA: 208 SQM

