



ALLEN & SHEPPARD.



1 Maple Avenue Pennant Hills NSW

4 2 2

Beyond its picturesque façade, this impeccably presented, single level, predominantly full brick home has been thoughtfully enhanced to embrace a lifestyle of effortless indoor/outdoor living, while highlighting the stunning period features of yesteryear with 21st century comfort and technology. Capitalising on the North to rear orientation of the house, the contemporary kitchen, light filled living and dining areas all flow effortlessly onto the covered entertaining deck and low maintenance level lawns, perfect for the growing family. There is the added bonus of a separate teenage retreat/home office or potential granny flat (STCA).

Features Include:

- Master bedroom with high ornate ceilings and built-ins
- Additional three bedrooms, one with study nook

Price : \$ 1,675,000
Land Size : 771.4 sqm
View : <https://www.allenandsheppard.com.au/sale/nsw/northern-suburbs/pennant-hills/residential/house/6204593>



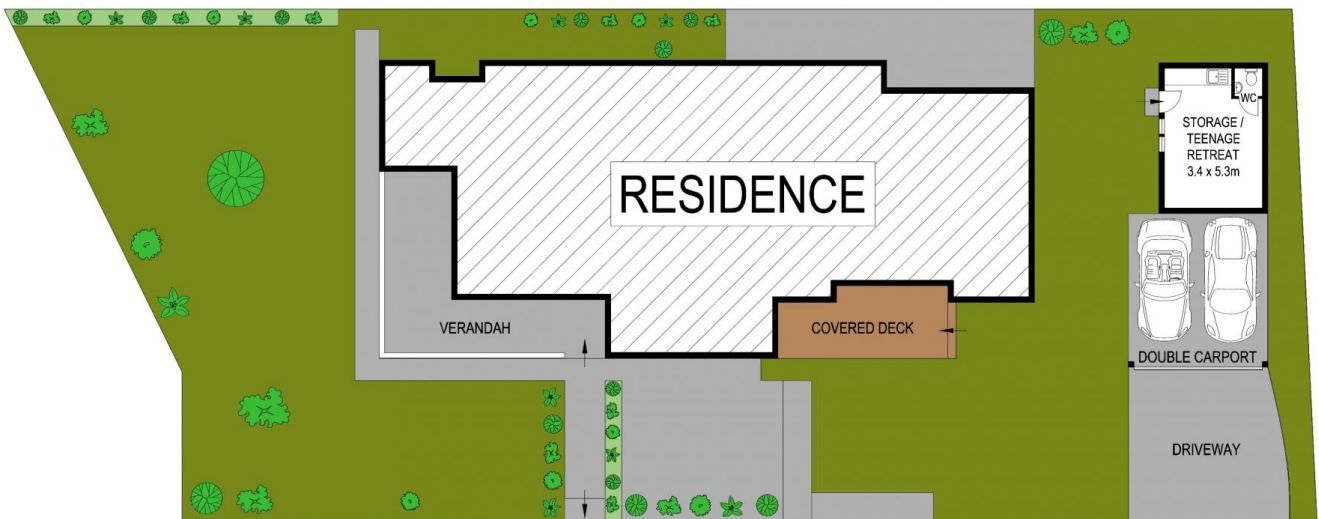
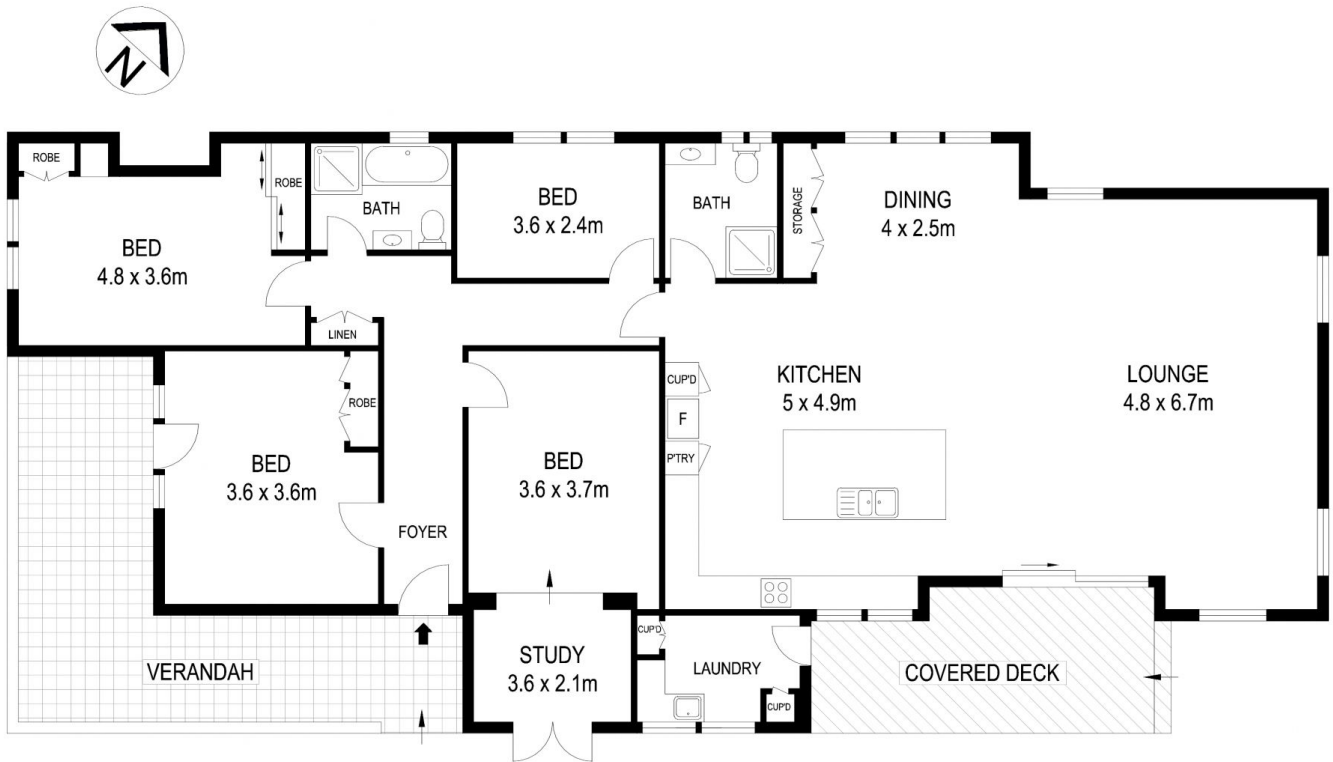
Craig Taylor
02 9481 9000



James Sheppard
02 9481 9000

<https://www.allenandsheppard.com.au>

1 Maple Avenue, Pennant Hills



Site Plan

DISCLAIMER
DIMENSIONS ARE APPROXIMATE AND SHOULD ONLY BE USED AS A GUIDE.
THEY ARE NOT TO SCALE AND NO LIABILITY WILL BE ACCEPTED.