



### 1 Copplestone Place Castle Hill NSW

3  2  2 

Located in the prestigious Oakhill estate, this spacious 3 bedroom Torrens titled duplex offers an idyllic, low maintenance lifestyle. With a flexible floorplan, light filled interiors and easy care gardens, this attractive home is perfect for first home buyers, young families or investors.

#### Features Include:

- Master bedroom with built-ins and en-suite
- An additional two generous bedrooms with built-ins
- Large main bathroom with separate bath and shower
- Open plan lounge offers an abundance of natural light through the large bay window
- The spacious kitchen provides ample bench space and storage, and overlooks the casual meals and second living area
- Flowing off the kitchen is the level yard, alfresco dining area and easy care gardens

**Price** : \$ 1,142,000  
**Land Size** : 381.9 sqm  
**View** : <https://www.allenandsheppard.com.au/sale/nsw/hills/castle-hill/residential/semi-detached/6204602>



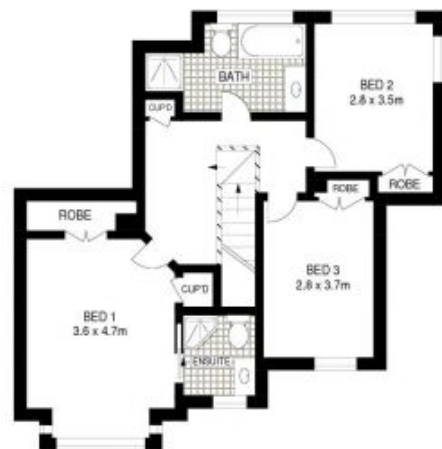
**Craig Taylor**  
02 9481 9000



**James Sheppard**  
02 9481 9000



GROUND FLOOR



FIRST FLOOR

Dimensions are approximate. All information contained is gathered from sources we believe to be reliable. However we cannot guarantee its accuracy and interested persons should rely on their own enquiries.  
www.visionphoto.com.au

## 1A COPPLESTONE PLACE, CASTLE HILL

APPROX. INTERNAL FLOOR AREA: 176 SQM

