



3 Corang Road Westleigh NSW

3  2  2 

This attractive single level residence is nestled on the high side of a popular street. With the bus stop at your door and only a short stroll to local shops, parks and schools, the home is ideal for those who enjoy easy living in a great location.

Price : \$ 1,310,000
Land Size : 673.6 sqm
View : <https://www.allenandsheppard.com.au/sale/nsw/hills/westleigh/residential/house/6204629>

Features Include:

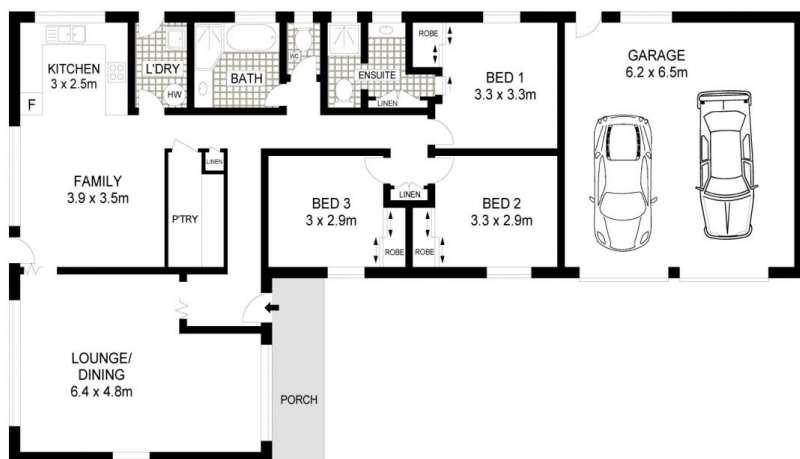
- Three bedroom all with built-ins, master with walk in robe and en-suite
- Main bathroom includes bathtub and separate shower.
- Large formal lounge with abundant natural light
- Neat & tidy kitchen with an extra-large pantry, overlooking the backyard
- Casual meals area flows effortlessly out to alfresco dining area
- Paved alfresco area amidst low maintenance, level lawns
- Double garage plus off street parking



Craig Taylor
02 9481 9000



James Sheppard
02 9481 9000



GROUND FLOOR



SITE PLAN

Dimensions are approximate. All information contained is gathered from sources we believe to be reliable. However we cannot guarantee its accuracy and interested persons should rely on their own enquiries.
www.visionphoto.com.au

3 CORANG ROAD, WESTLEIGH
 APPROX. INTERNAL FLOOR AREA: 170 SQM

