



ALLEN & SHEPPARD.



19 Beresford Road Thornleigh NSW

3 1 2

Situated on one of Thornleigh's most popular streets, and occupying a rare 2 street frontage. The home has been tastefully upgraded and is ready to move in now and enjoy, whilst offering scope to renovate, rebuild, or take advantage of the large, two street frontage block (STCA). It's situated within footsteps of quality local schools, childcare, parks and transport.

Price : \$ 1,295,000
Land Size : 923.2 sqm
View : <https://www.allenandsheppard.com.au/sale/nsw/northern-suburbs/thornleigh/residential/house/6204682>

Features Include:

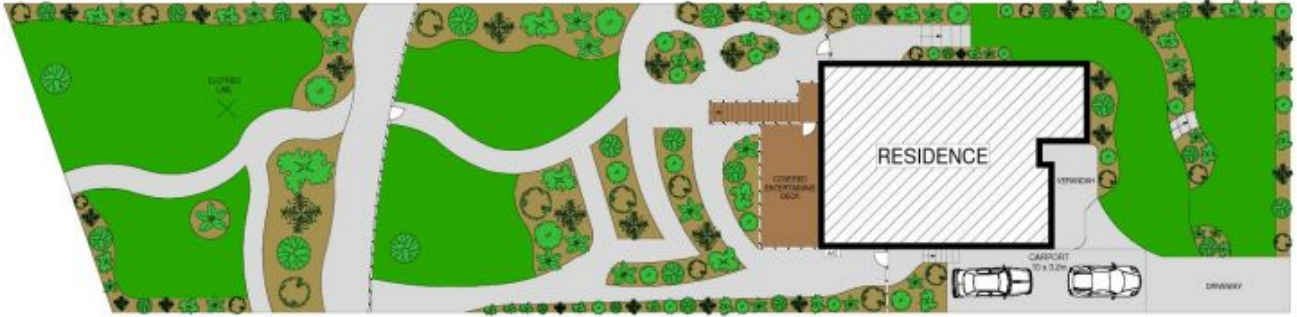
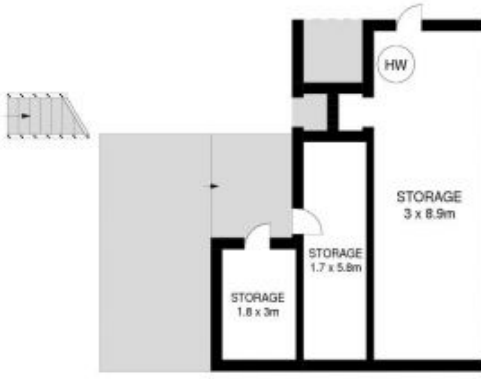
- Three good sized bedrooms, two with large floor to ceiling built-ins
- Light filled, modern kitchen with loads of storage and bench space
- The large covered deck is bathed in sunshine all year round, and overlooks the landscaped gardens & paved alfresco area, perfect for summer BBQ's & entertaining the kids.



Craig Taylor
02 9481 9000



James Sheppard
02 9481 9000



Dimensions are approximate. All information contained is gathered from sources we believe to be reliable. However we cannot guarantee its accuracy and interested persons should rely on their own enquiries.
www.visionphoto.com.au

19 BERESFORD ROAD, THORNLEIGH

APPROX. INTERNAL FLOOR AREA: 151 SQM

