



22 Wareemba Avenue Thornleigh NSW

4  2  2 

Set across one level, this large brick home represents great value for any family. Offering 4 bedrooms all with built in robes and the main with an ensuite, 2 bathrooms, an updated eat in kitchen and an oversized open plan living space that allows room for all in the family. The living areas consist of a lounge and dining room that flow into a family room overlooking a paved entertaining area and level rear yard. The 745m2 lot backs onto a reserve allowing privacy and a convenient location.

? A new driveway into the large double carport.

? Sun drenched living spaces ideal for entertaining.

? Functional designed family kitchen with an abundance of cupboard space

? Easy access to the local schools, shops and transport.

? Private rear gardens with level lawn and bush surroundings

? Four light filled bedrooms with robes, main bedroom with

Price : \$ 1,225,000

Land Size : 745 sqm

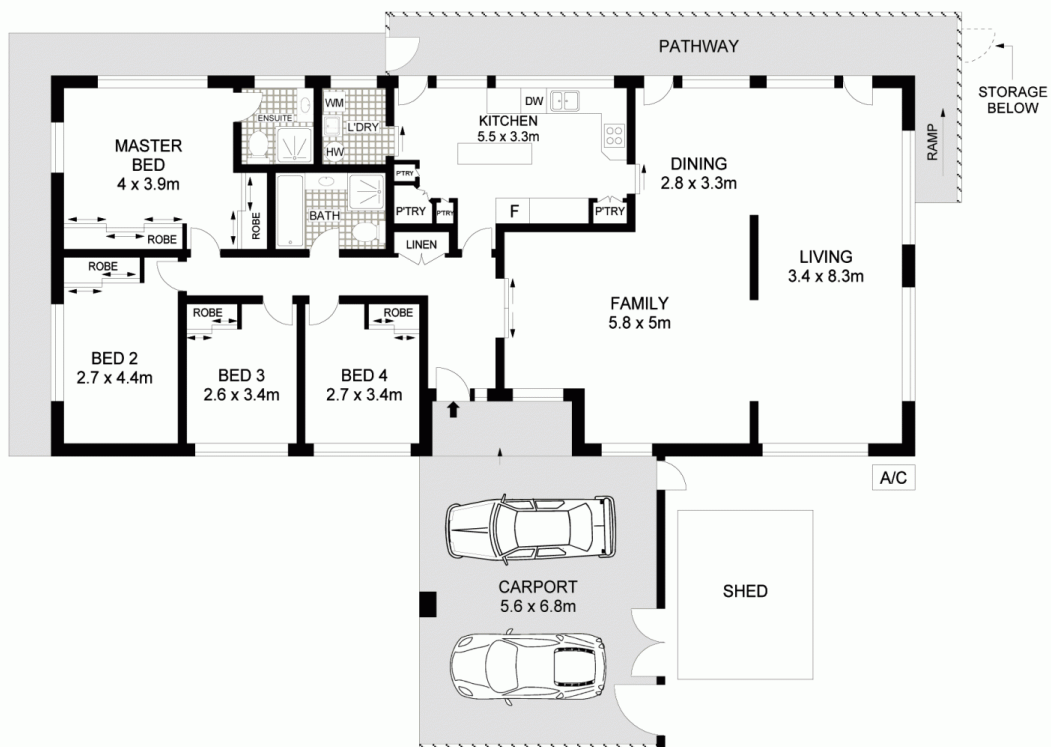
View : <https://www.allenandsheppard.com.au/sale/nsw/northern-suburbs/thornleigh/residential/house/6204697>



James Sheppard
02 9481 9000



Craig Taylor
02 9481 9000



Dimensions are approximate. All information contained is gathered from sources we believe to be reliable. However we cannot guarantee its accuracy and interested persons should rely on their own enquiries.
www.visionphoto.com.au

22 WAREEMBA AVENUE, THORNLEIGH

APPROX. INTERNAL FLOOR AREA: 161 SQM



ALLEN & SHEPPARD