






### 39 George Street Pennant Hills NSW

4  2  1 

This 1924 built full brick Bungalow is positioned on approx. 1542 sq metre suburban block, perfect for those families that love space and fresh air. You will fall in love with the extra wide hallway, fret work, high patterned ceilings and the generous size. The versatile floorplan offers space and options with 4 large bedrooms, an open country style kitchen and a large lounge and dining featuring a open fire place and a great use of glass that brings the green of the garden inside. The added bonus is the downstairs studio, with internal and external entry, it's own bathroom and laundry making it ideal for a teenage retreat, visitor accommodation or a home office. You will spend hours enjoying the peace from the back deck overlooking the vegetable patch, chickens and the kids playing in your own piece of Australian bushland, you will feel miles away from the Sydney bustle. Positioned 700m from Pennant Hills station, this private and quiet property offers a rare

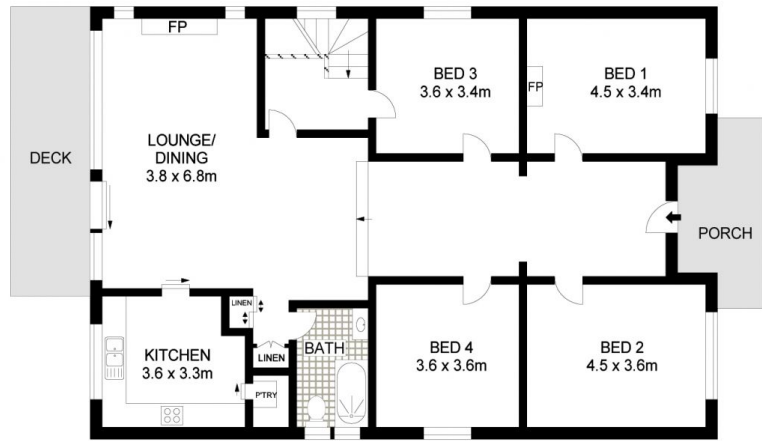
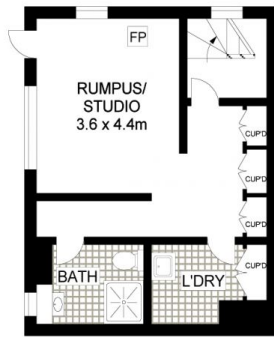
**Price** : \$ 1,450,000  
**Land Size** : 1542 sqm  
**View** : <https://www.allenandsheppard.com.au/sale/nsw/northern-suburbs/pennant-hills/residential/house/6204722>



**James Sheppard**  
02 9481 9000



**Craig Taylor**  
02 9481 9000



Dimensions are approximate. All information contained is gathered from sources we believe to be reliable. However we cannot guarantee its accuracy and interested persons should rely on their own enquiries.  
www.visionphoto.com.au

**39 GEORGE STREET, PENNANT HILLS**  
APPROX. INTERNAL FLOOR AREA: 197 SQM

