



ALLEN & SHEPPARD.



2/15 Leo Road Pennant Hills NSW

3 2 2

This recently updated, single level double brick villa offers an idyllic, low maintenance lifestyle in an ultra-convenient locale. Features include high ceilings, light soaked interiors and a practical floorplan that flows effortlessly onto a stunning entertainer's deck, this property is one not to be missed!

Price : \$ 1,080,000

View : <https://www.allenandsheppard.com.au/sale/nsw/northern-suburbs/pennant-hills/residential/villa/6204732>

Features Include;

- Master bedroom with built-in robes and en-suite
- Two additional double bedrooms, both with built-ins
- Stunning main bathroom
- Spacious open plan lounge/dining flows effortlessly onto the huge entertainers deck with built in seating
- Modern, high quality kitchen with adjoining laundry & loads of storage
- Ducted air conditioning, bamboo flooring throughout

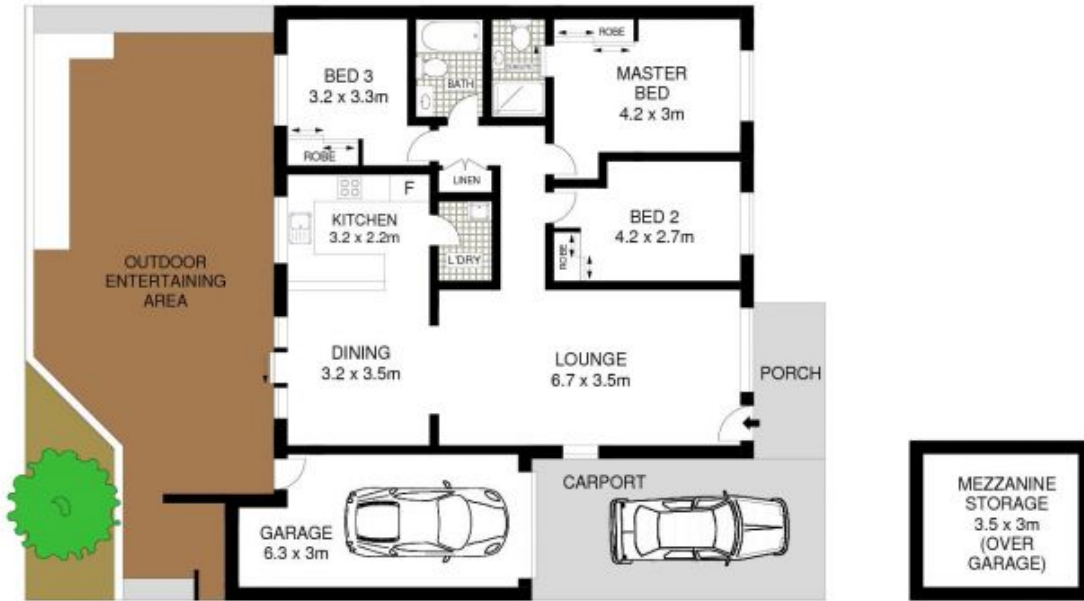


Craig Taylor
02 9481 9000



James Sheppard
02 9481 9000

<https://www.allenandsheppard.com.au>



Dimensions are approximate. All information contained is gathered from sources we believe to be reliable. However we cannot guarantee its accuracy and interested persons should rely on their own enquiries.
www.visionphoto.com.au

2/15 LEO ROAD, PENNANT HILLS

APPROX. INTERNAL FLOOR AREA: 117 SQM

