






12 Bridgeview Crescent Thornleigh NSW

4  2  1 

Situated in a sought-after family friendly, convenient and quiet location in Thornleigh, this well-kept home is being offered to the market for the first time. Loved and maintained by the original owners, this property represents a great opportunity to move in and add your own touches as you go. The versatile floorplan offers multiple living areas, 4 bedrooms plus a study, an under-house workshop and a lock up garage. You will enjoy the formal lounge and dining, but it is the modern kitchen that opens to the glass filled family room flowing to the covered rear deck overlooking the large inground pool and yard that will make you want to stay. In addition to the study the property features a home office or what would be an ideal rumpus room / teenage retreat.

? A quiet location just 750m to Thornleigh Train Station and shops.

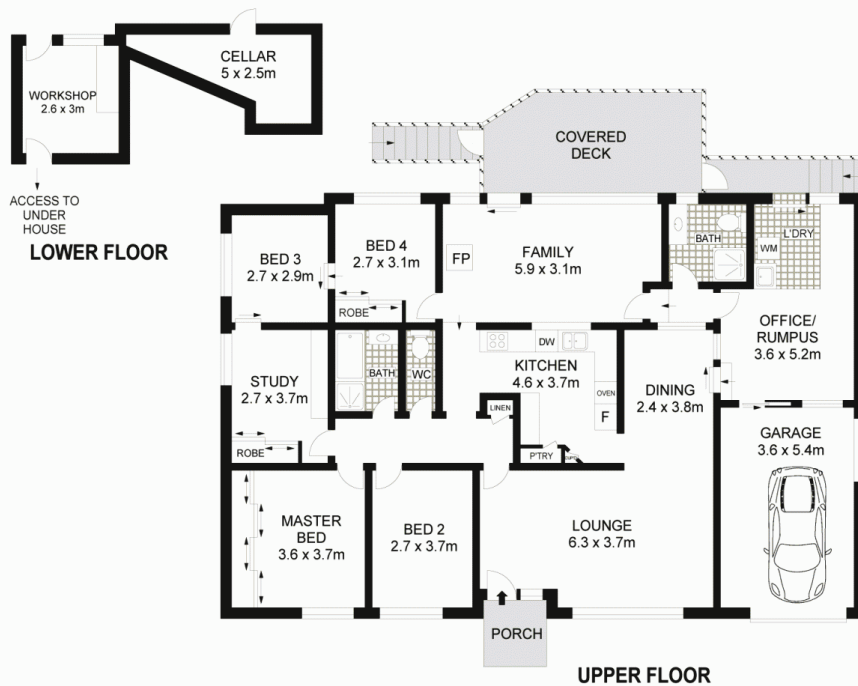
Land Size : 796 sqm
View : <https://www.allenandsheppard.com.au/sale/nsw/northern-suburbs/thornleigh/residential/house/6204762>



James Sheppard
02 9481 9000



Craig Taylor
02 9481 9000



SITE PLAN

Dimensions are approximate. All information contained is gathered from sources we believe to be reliable. However we cannot guarantee its accuracy and interested persons should rely on their own enquiries.
www.visionphoto.com.au

12 BRIDGEVIEW CRESCENT, THORNLEIGH

APPROX. INTERNAL FLOOR AREA: 196 SQM



ALLEN & SHEPPARD