



4/28 George Street Pennant Hills NSW

3  **2**  **2** 

This generously sized townhouse offers two large and light living areas both with a level flow outside to your own private patio and large near level lawn. Ideal for families or down sizers, this home is freshly painted and carpeted, boasting loads of storage, two bathrooms and the bonus of a large double garage downstairs. Positioned at the end of a small and exclusive complex this home is within a convenient walk to station, shops and parks.

Price : \$ 858,000

View : <https://www.allenandsheppard.com.au/sale/nsw/northern-suburbs/pennant-hills/residential/townhouse/6204808>

Features include :

? Three large bedrooms all with built in robes and ensuite to main.

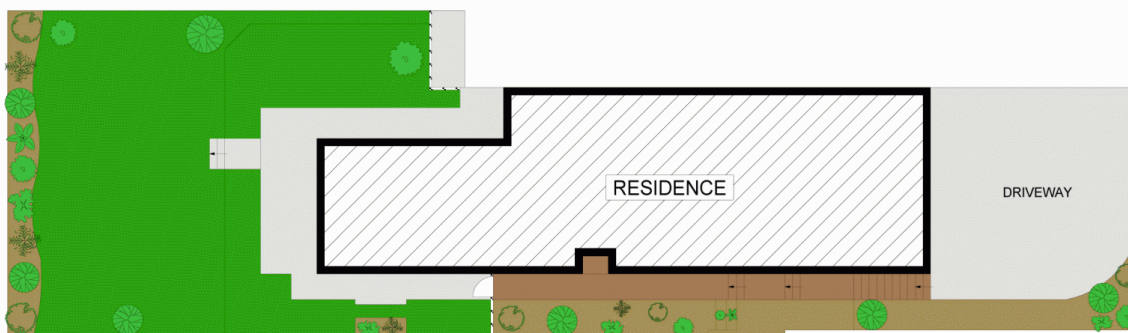
? Two living spaces including a large lounge and dining plus a family room off the generously sized kitchen complete with breakfast bar and view out to the sun covered rear patio and lawn.



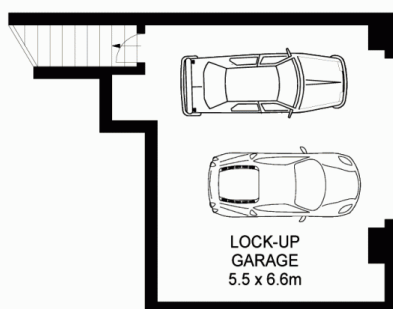
James Sheppard
02 9481 9000



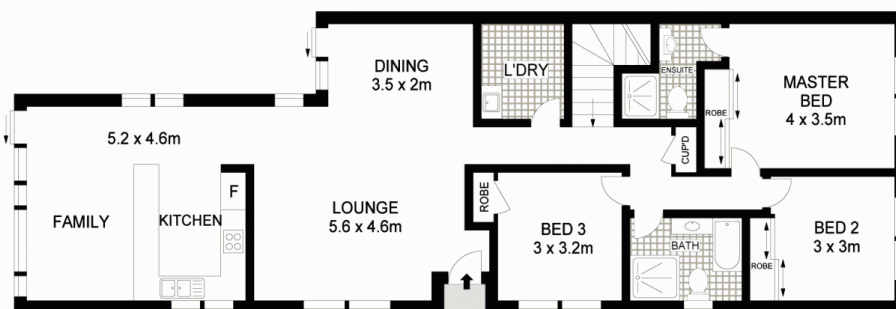
Craig Taylor
02 9481 9000



SITE PLAN



LOWER GROUND FLOOR



GROUND FLOOR

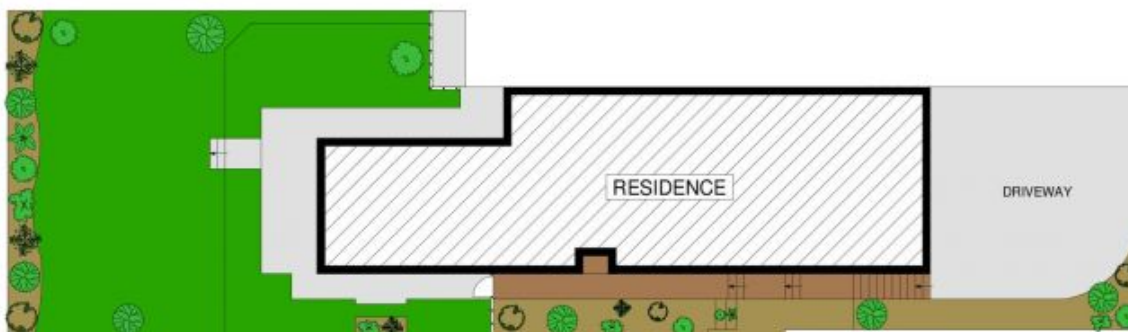
Dimensions are approximate. All information contained is gathered from sources we believe to be reliable. However we cannot guarantee its accuracy and interested persons should rely on their own enquiries.
www.visionphoto.com.au

4/28 GEORGE STREET, PENNANT HILLS

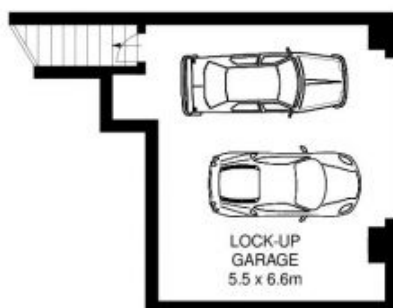
APPROX. INTERNAL FLOOR AREA: 166 SQM



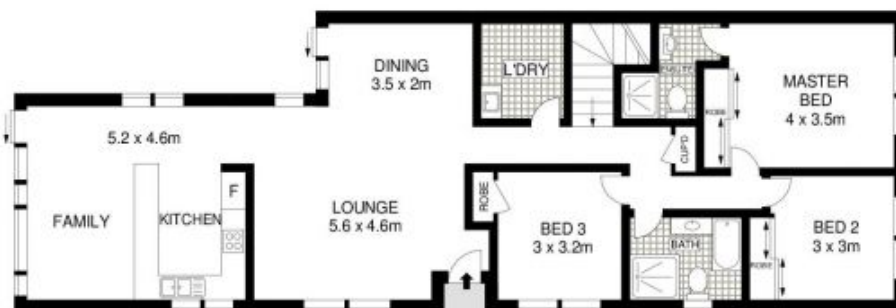
ALLEN & SHEPPARD



SITE PLAN



LOWER GROUND FLOOR



GROUND FLOOR

Dimensions are approximate. All information contained is gathered from sources we believe to be reliable. However we cannot guarantee its accuracy and interested persons should rely on their own enquiries.
www.visionphoto.com.au

4/28 GEORGE STREET, PENNANT HILLS

APPROX. INTERNAL FLOOR AREA: 166 SQM



ALLEN & SHEPPARD