



ALLEN & SHEPPARD.



37 Eucalyptus Drive Westleigh NSW

4 2 1

Enviably positioned in a beautiful cul-de-sac and sitting on a level 695sqm (approx.) block, this single level, brick home has been designed with an emphasis on lifestyle, boasting multiple light filled living areas that flow seamlessly between indoor/outdoor living, culminating on the private alfresco entertaining deck overlooking the sparkling in-ground pool. The home is an easy walk to Westleigh Shopping Centre, Ruddock Park and Thornleigh West Public School.

Features:

- Generous master bedroom with built-ins & en-suite
- A further 3 bedrooms all with built-ins
- L shaped lounge and dining adjoins the kitchen and flows outdoors to both the front and rear gardens
- Open plan kitchen with breakfast bar, ample bench space and storage

Price : \$ 1,475,000

Land Size : 695 sqm

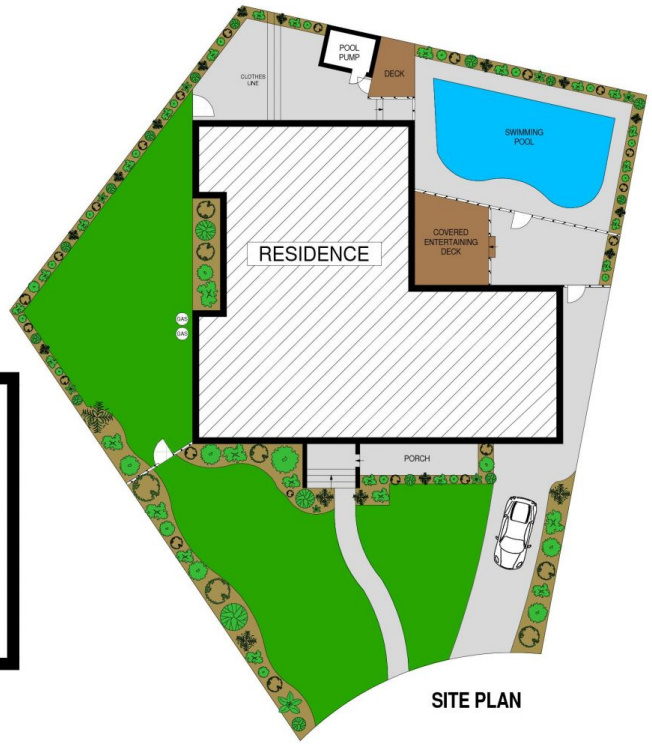
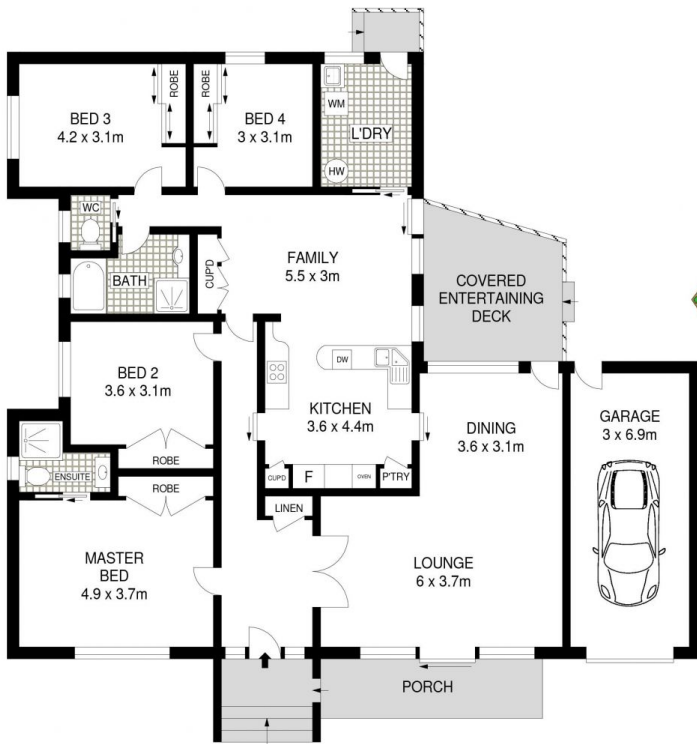
View : <https://www.allenandsheppard.com.au/sale/nsw/hills/westleigh/residential/house/6204886>



Craig Taylor
02 9481 9000



James Sheppard
02 9481 9000



SITE PLAN

Dimensions are approximate. All information contained is gathered from sources we believe to be reliable. However we cannot guarantee its accuracy and interested persons should rely on their own enquiries.
www.visionphoto.com.au

37 EUCALYPTUS DRIVE, WESTLEIGH

APPROX. INTERNAL FLOOR AREA: 186 SQM

