



30 Tillock Street Thornleigh NSW

3  1  1 

This welcoming and much loved property has been enjoyed by the same family for over 40 years and is now offered for sale giving an opportunity for someone else to enjoy its beauty and convenience.

The property is situated in a very convenient location being within walking distance of both Thornleigh and Pennant Hills stations, shopping centres and schools, whilst being sheltered in quiet and peaceful surrounds.

The house, positioned high on the block of approximately 1220sqm, gives a wonderful outlook from the front deck over an abundance of magnificent, mature trees and shrubs. Anyone wanting to live in nature's beauty will love this unique property - an absolute adventure playground for adventurous children - no getting bored here!!

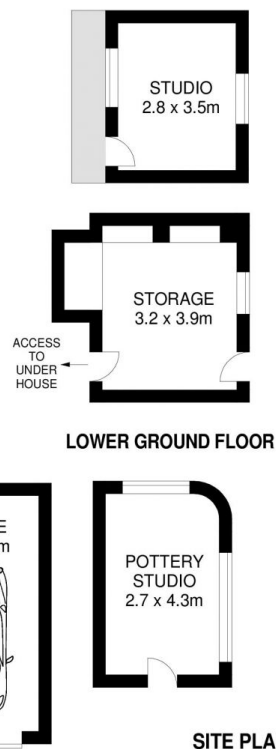
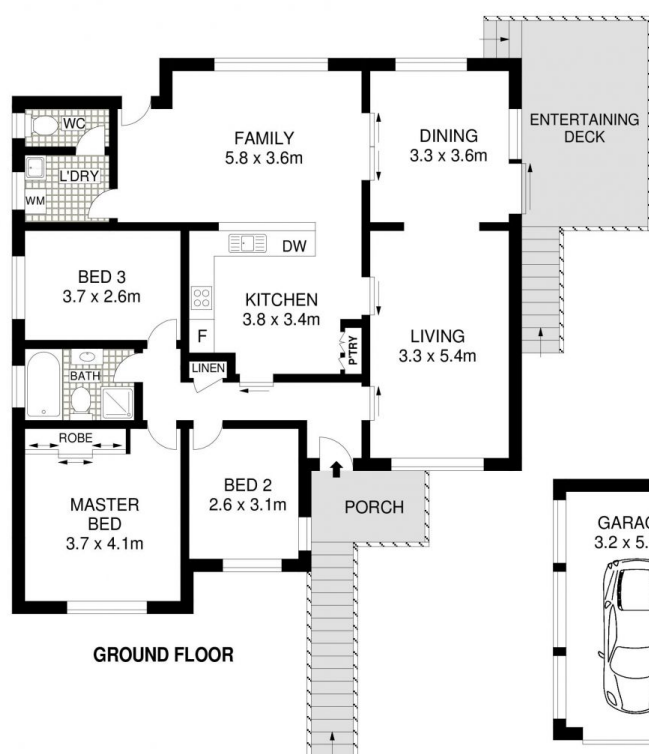
Price : \$ 1,120,000
Land Size : 1220 sqm
View : <https://www.allenandsheppard.com.au/sale/nsw/northern-suburbs/thornleigh/residential/house/6204959>



Craig Taylor
02 9481 9000



Dawn Rule
0408 197 691



Dimensions are approximate. All information contained is gathered from sources we believe to be reliable. However we cannot guarantee its accuracy and interested persons should rely on their own enquiries.
www.visionphoto.com.au

30 TILLOCK STREET, THORNLEIGH
APPROX. INTERNAL FLOOR AREA: 122 SQM

