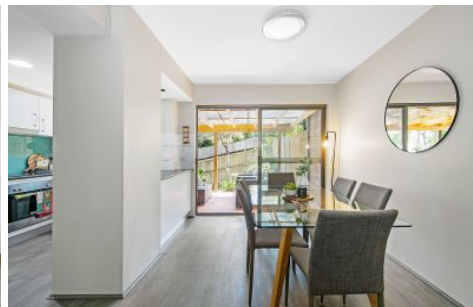




ALLEN & SHEPPARD.



11/16-18 Nelson Street Thornleigh NSW

2 🏠 1 🚗 2 🚗

Positioned in an ideal location in a peaceful, leafy setting, this spacious full brick townhouse is set in a quiet family friendly neighbourhood with bus and playground on the street and easy access to some of Sydney's most prestigious schools.

View : <https://www.allenandsheppard.com.au/lease/nsw/northern-suburbs/thornleigh/residential/townhouse/6204991>

A practical design with a modern open plan living featuring lounge and dining that flows with glass sliding doors to your own private courtyard and garden.

- ? Modern kitchen & appliances with new dishwasher
- ? Private leafy, outdoor courtyard perfect for entertaining
- ? Small grassed area for children and pets to play
- ? Renovated bathroom including bath tub
- ? Large master bedroom with built in wardrobe
- ? Second bedroom with built in wardrobe
- ? Laundry with additional toilet

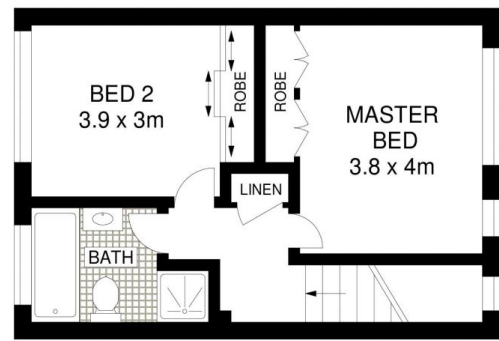
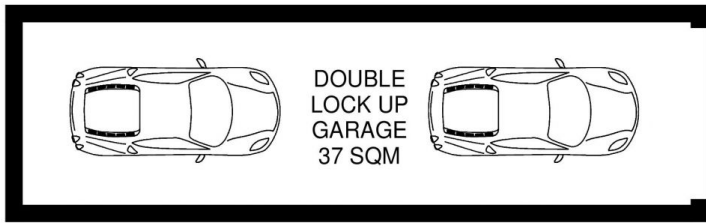


Gian Wilson

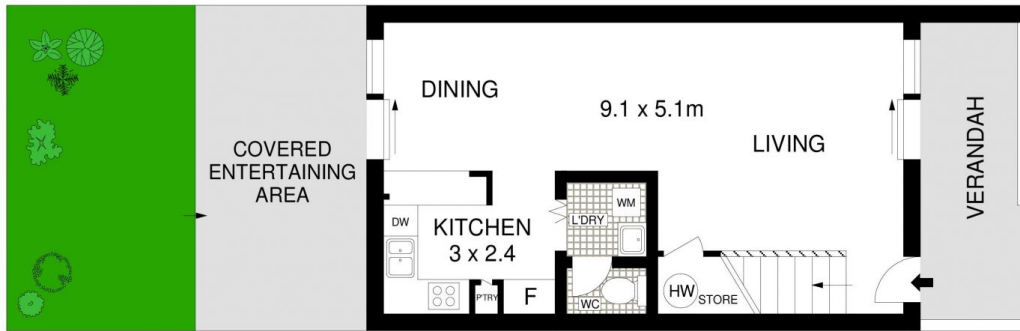


Lauren Emanuel
02 9481 9000

<https://www.allenandsheppard.com.au>



FIRST FLOOR



GROUND FLOOR

Dimensions are approximate. All information contained is gathered from sources we believe to be reliable. However we cannot guarantee its accuracy and interested persons should rely on their own enquiries.
www.visionphoto.com.au

11/16-18 NELSON STREET, THORNLEIGH

APPROX. INTERNAL FLOOR AREA: 87 SQM

