



ALLEN & SHEPPARD.



28 Livingstone Way Thornleigh NSW

3 2 2

This large, well located, light and bright townhouse will effortlessly accommodate a variety of family requirements. Consisting of a casual meals area plus a large formal lounge and dining opening to leafy North facing covered terrace and spacious garden, this modern home offers a relaxing low maintenance lifestyle with space to move. The 3 spacious bedrooms upstairs all offer built-in robes and the large ensuite offers a corner bath. Downstairs features hard flooring throughout, WC for the guests and there are two lock-up garages plus storage and off-street parking, all in a convenient location.

Features:

? Large kitchen with gas cooking overlooks the front courtyard and flows to a casual meals area.

? The open plan lounge and dining room overlook and open onto the North facing covered patio

? Turf covered and private back garden perfect for the kids

Price : \$ 1,340,000

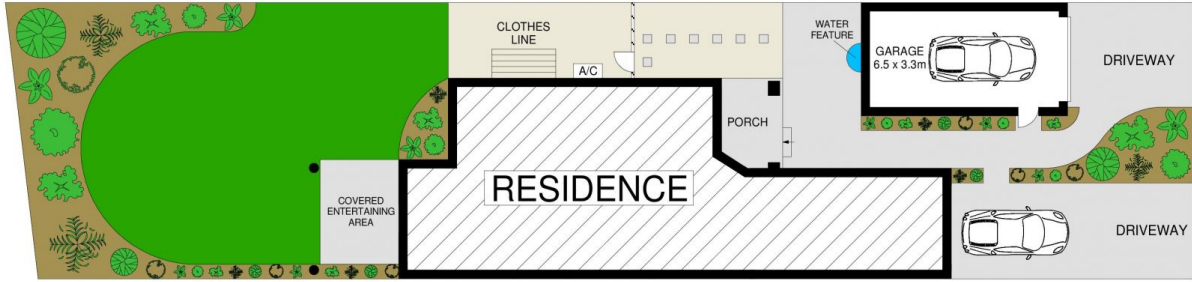
View : <https://www.allenandsheppard.com.au/sale/nsw/northern-suburbs/thornleigh/residential/townhouse/6896836>



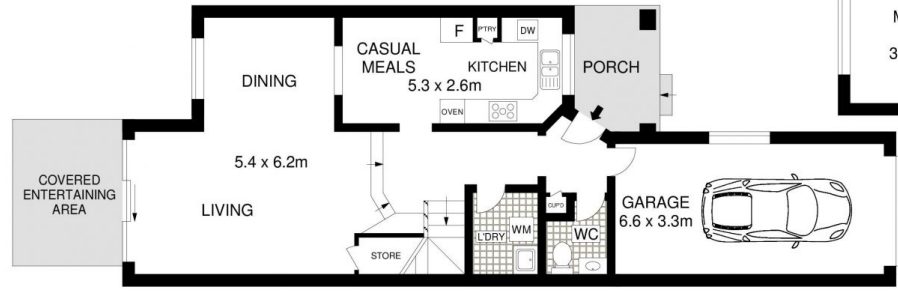
James Sheppard
02 9481 9000



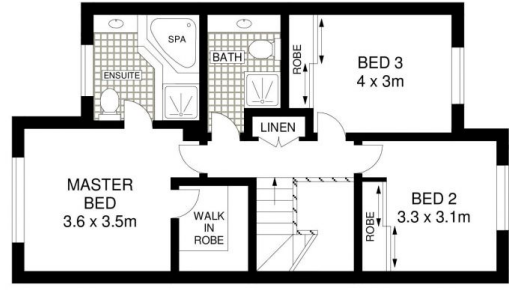
Craig Taylor
02 9481 9000



SITE PLAN



GROUND FLOOR



FIRST FLOOR

Dimensions are approximate. All information contained is gathered from sources we believe to be reliable. However we cannot guarantee its accuracy and interested persons should rely on their own enquiries.
www.visionphoto.com.au

28 LIVINGSTONE WAY, THORNLEIGH
APPROX. INTERNAL FLOOR AREA: 152 SQM

