



# ALLEN & SHEPPARD.



## 35 Dartford Road Thornleigh NSW

5 2 2

Positioned on one of Thornleigh's most desirable streets, this much-loved family home is offered to the market for the first time ever. Embracing a generous 796sqm (approx.) of land, this inviting brick home features high ceilings, light filled rooms and a versatile floorplan. Providing a wonderful opportunity to those looking to enter the local property market, the home is ready to move in now and enjoy yet provides endless possibilities and incredible future potential.

### Features:

- Four/five good sized bedrooms, four with built-ins
- Modern kitchen with stone benchtops, abundant storage, and meals area
- Covered entertaining deck overlooks the easy-care lawns and gardens
- Fully enclosed backyard with an expansive grassed area

**Land Size** : 796 sqm

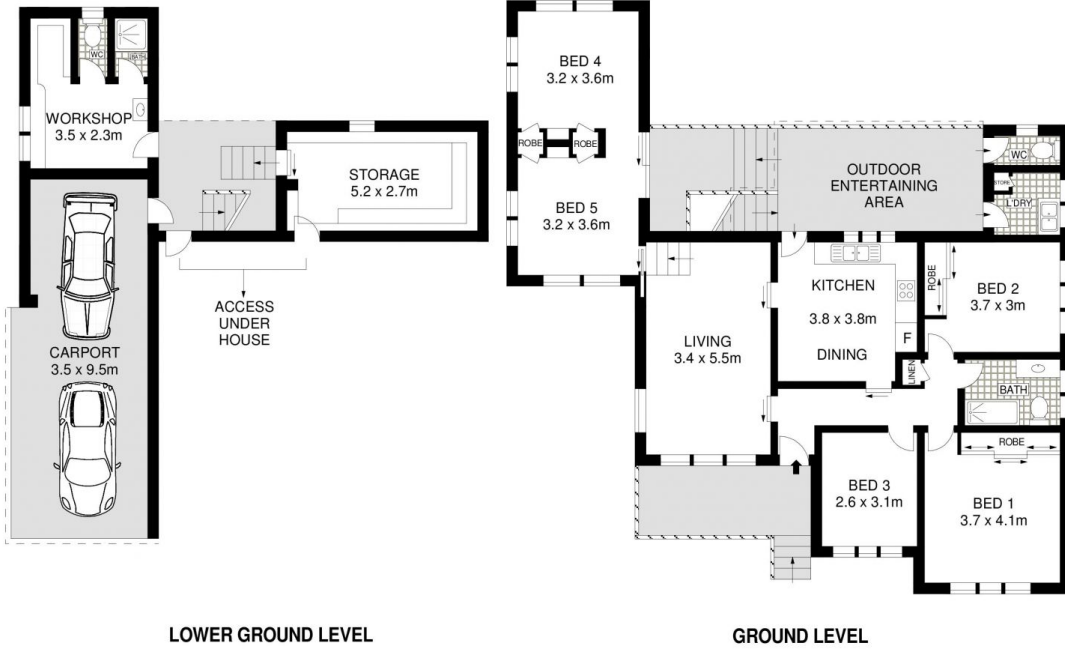
**View** : <https://www.allenandsheppard.com.au/sale/nsw/northern-suburbs/thornleigh/residential/house/7169656>



**Craig Taylor**  
02 9481 9000



**James Sheppard**  
02 9481 9000



LOWER GROUND LEVEL

GROUND LEVEL



SITE PLAN

Dimensions are approximate. All information contained is gathered from sources we believe to be reliable. However we cannot guarantee its accuracy and interested persons should rely on their own enquiries.  
www.visionphoto.com.au

**35 DARTFORD ROAD, THORNLEIGH**

APPROX. INTERNAL FLOOR AREA: 142 SQM

