




10 Wanawong Drive Thornleigh NSW

3  2  2 

If you love the quiet of a bushland setting & need the convenience & proximity of the station & other amenities, this charming property could be the one for you.

The home is set over multiple levels, all with an outlook over nature's garden. It offers 3 bedrooms, 2 bathrooms, lounge, dining & rumpus rooms. A large timber deck, with access off the rumpus provides the opportunity to spend endless hours in relaxation & family fun. Have fun with the whole family over for the Sunday BBQ, lie back with a good book, drink in the serenity & listen to the birdsong.

Property Features:

- ? Surrounded by greenery, vaulted ceilings in the living room with windows highlighting the bushland views
- ? Multilevel property set over 4 levels with hardwood decks

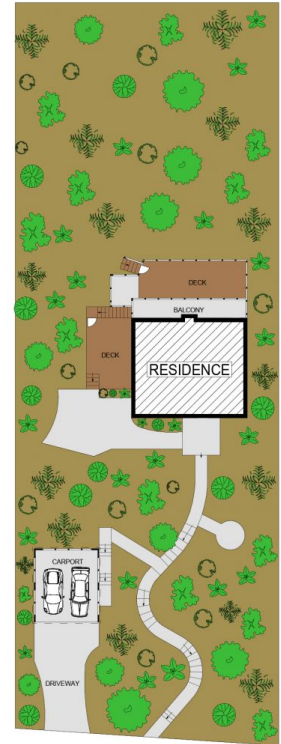
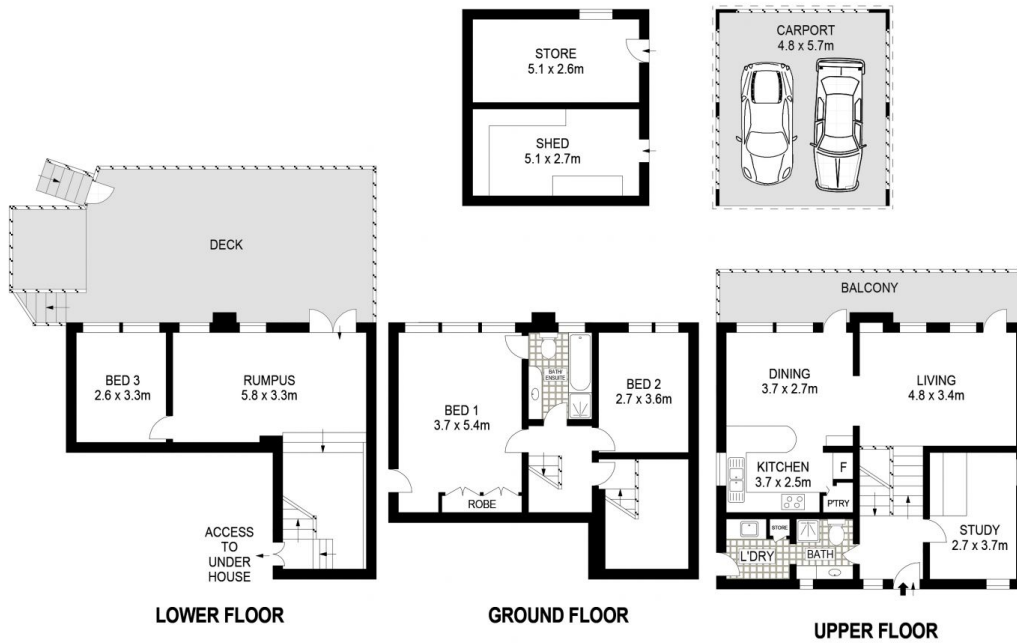
Price : \$ 1,410,000
Land Size : 967.5 sqm
View : <https://www.allenandsheppard.com.au/sale/nsw/northern-suburbs/thornleigh/residential/house/7618703>



Craig Taylor
02 9481 9000



James Sheppard
02 9481 9000



SITE PLAN

Dimensions are approximate. All information contained is gathered from sources we believe to be reliable. However we cannot guarantee its accuracy and interested persons should rely on their own enquiries.
www.visionphoto.com.au

10 WANAWONG DRIVE, THORNLEIGH

APPROX. INTERNAL FLOOR AREA: 154 SQM



ALLEN & SHEPPARD