



ALLEN & SHEPPARD.



55 Duffy Avenue Thornleigh NSW

3 2 2

Positioned on an approx. 750sqm sqm block, this family home offers an expansive floorplan, light filled interiors and a leafy outlook from every window, all combining to create a wonderful sense of space, peace, and privacy. Exceptionally located, with Thornleigh & Westleigh shopping centres, Thornleigh train station and the local primary school all within easy walking distance. Ready to move into now and enjoy, whilst offering enormous scope to add value in the future, do not miss this opportunity to secure a home in such a highly sought after location.

Features:

- Generous master bedroom with walk-in robe, modern ensuite, split system A/C, and opens onto a large, private tiled entertaining area surrounded by greenery
- A further two good sized bedrooms
- Timber kitchen with good storage and gas cooking

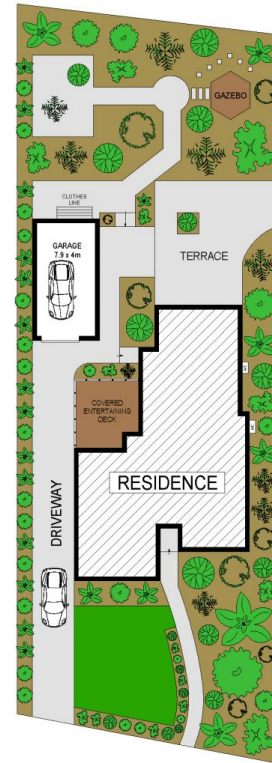
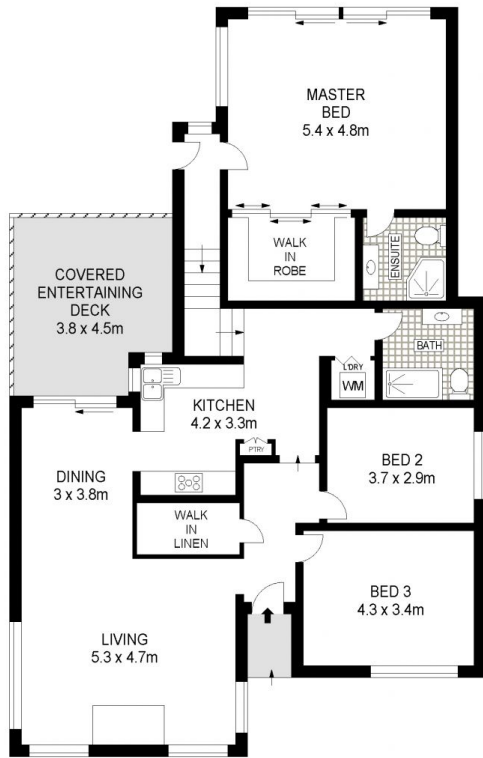
Price : \$ 1,735,000
Land Size : 752.5 sqm
View : <https://www.allenandsheppard.com.au/sale/nsw/northern-suburbs/thornleigh/residential/house/7675657>



Craig Taylor
02 9481 9000



James Sheppard
02 9481 9000



Dimensions are approximate. All information contained is gathered from sources we believe to be reliable. However we cannot guarantee its accuracy and interested persons should rely on their own enquiries.
www.visionphoto.com.au

55 DUFFY AVENUE, THORNLEIGH

APPROX. INTERNAL FLOOR AREA: 145 SQM

