



## 1 Dale Close Thornleigh NSW

3  1  2 

Move straight into this conveniently located 3 bedroom, brick home. Relax beside your sun drenched private mineral pool, whilst watching the birds flying over the bush. Inside, you'll find an open plan lounge and dining area that seamlessly connects to the modern kitchen. Flowing effortlessly to a spacious deck overlooking the gas heated pool, it's the perfect entertainer. Situated on approximately 500m<sup>2</sup> of land, this fully fenced corner block offers level lawn for the kids to play, ample gardens and a utility area including off street parking for 2 cars and a garden shed. Location location, location, this home is just 800m walk to Thornleigh train station and shops and an easy walk to multiple primary schools, high school and the Great Northern walk bush trail. Don't miss out on your chance to see this perfectly located life-style home.

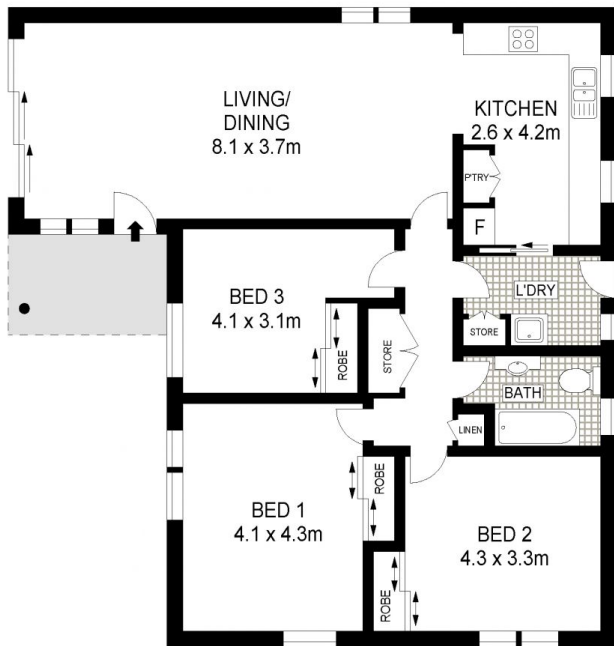
**Price** : \$ 1,710,000  
**Land Size** : 500 sqm  
**View** : <https://www.allenandsheppard.com.au/sale/nsw/northern-suburbs/thornleigh/residential/house/7792748>



**James Sheppard**  
02 9481 9000



**Craig Taylor**  
02 9481 9000



SHED  
2.9 x 0.9m

SHED  
2.3 x 2.3m



**SITE PLAN**

Dimensions are approximate. All information contained is gathered from sources we believe to be reliable. However we cannot guarantee its accuracy and interested persons should rely on their own enquiries.  
www.visionphoto.com.au

**1 DALE CLOSE, THORNLEIGH**  
APPROX. INTERNAL FLOOR AREA: 102 SQM

