



38 Livingstone Way Thornleigh NSW

4  2  2 

This well-maintained home offers an expansive floorplan, light filled interiors and a leafy outlook, all combining to create a wonderful sense of space, peace, and privacy. Exceptionally located, with Thornleigh & Westleigh shopping centres, Thornleigh train station, bus stop and the local primary school all within easy walking distance. Ready to move into now and enjoy, whilst offering scope to add value in the future, do not miss this opportunity to secure a home in such a highly sought after location.

Features:

- Generous master bedroom with a double bank of wardrobes and ensuite
- A further two good sized bedrooms upstairs, both with built-ins
- The fourth bedroom, or home office is situated on the ground floor.

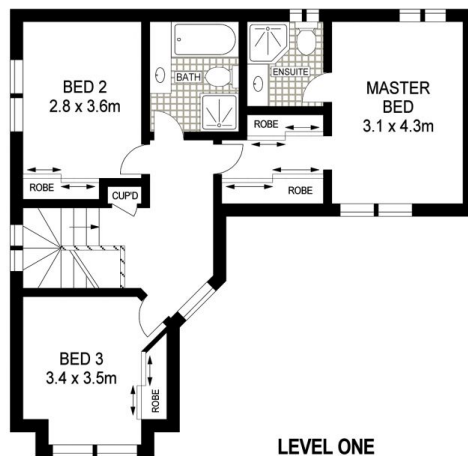
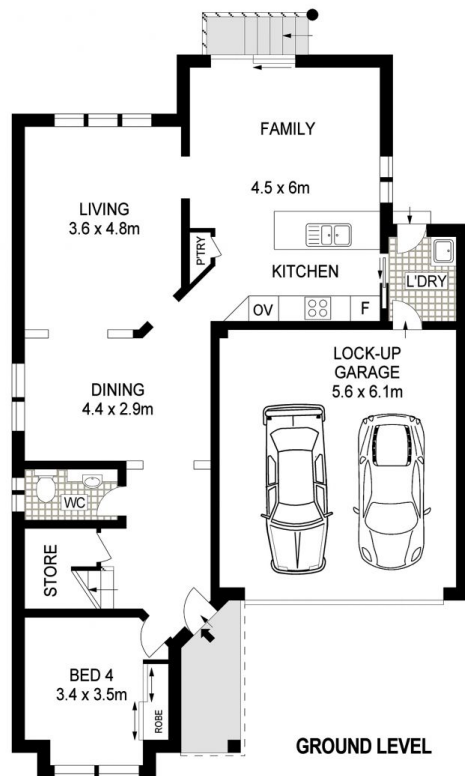
Price : \$ 1,710,000
Land Size : 406.1 sqm
View : <https://www.allenandsheppard.com.au/sale/nsw/northern-suburbs/thornleigh/residential/house/7931607>



Craig Taylor
02 9481 9000



James Sheppard
02 9481 9000



Dimensions are approximate. All information contained is gathered from sources we believe to be reliable. However we cannot guarantee its accuracy and interested persons should rely on their own enquiries.
www.visionphoto.com.au

38 LIVINGSTONE WAY, THORNLEIGH

APPROX. INTERNAL FLOOR AREA: 193 SQM



ALLEN & SHEPPARD